

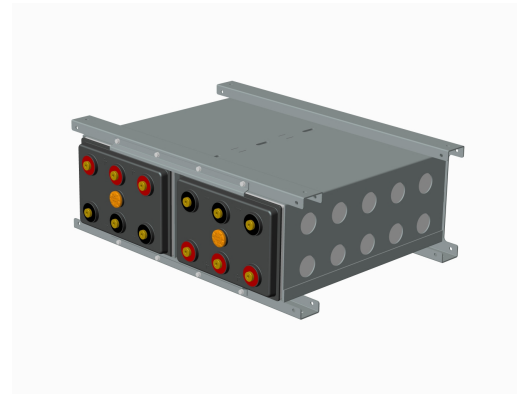


LMB Series-Modular Battery

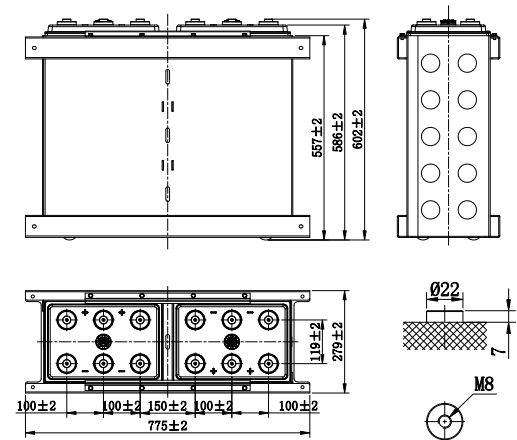
LMB2-2000(2V2000Ah)

Specifications

Rated Voltage	2V	
Nominal Capacity	C ₁₀ , 1.80V/cell	2000Ah
Dimension	Length	319±2mm (12.6 inches)
	Width	220±2mm (8.66 inches)
	Depth	576±2mm (22.7 inches)
	Total Depth	592±2mm (23.3 inches)
Approx Weight	267.0kg/2 PCS (588.6 lbs/2 PCS)	
Terminal	M8	
Container Material	PP+Steel	
Rated Capacity (25°C)	2120.0 Ah	C20(106.0A, 1.80V/cell)
	2000.0 Ah	C10(200.0A, 1.80V/cell)
	1750.0 Ah	C5(350.0A, 1.75V/cell)
	1560.0 Ah	C3(520.0A, 1.75V/cell)
	1229.0 Ah	C1(1229.0A, 1.60V/cell)
Max. Discharge Current	16000A (5s)	
Internal Resistance (25°C)	Approx 0.2mΩ	
Operating Temp. Range	Discharge	-20 ~ 55°C (-4 ~ 131°F)
	Charge	-20 ~ 40°C (-4 ~ 104°F)
	Storage	-15 ~ 50°C (5 ~ 122°F)
Nominal Operating Temp. Range	25±3°C (77±5°F)	
Cycle Use	Initial Charging Current less than 600A. Voltage 2.40V~2.50V at 25°C(77°F)Temp. Coefficient -5mV/°C	
Standby Use	Initial Charging Current less than 600A. Voltage 2.25V~2.30V at 25°C(77°F)Temp. Coefficient -3mV/°C	
Effect of temp. to Capacity	40°C (104°F)	103%
	25°C (77°F)	100%
	0°C (32°F)	86%
Self Discharge	LMB series batteries may be stored for up to 6 months at 25°C(77°F) and then a freshening charge is required. For higher temperatures the time interval will be shorter.	



Layout



Constant Current Discharge (Amperes) at 25 °C (77°F)

F.V/Time	30min	45min	1h	1.5h	2h	3h	4h	5h	6h	8h	10h	20h
1.85V/cell	1247.9	1038.5	944.7	759.6	615.3	468.1	376.5	317.7	275.8	224.2	187.4	100.5
1.80V/cell	1410.8	1136.7	1018.5	831.0	669.5	501.8	405.9	342.2	295.8	240.0	200.0	106.0
1.75V/cell	1564.7	1260.2	1100.9	859.0	690.0	520.0	416.0	350.0	302.0	244.4	203.1	107.4
1.70V/cell	1665.8	1333.0	1144.4	888.0	712.0	535.2	426.5	358.0	308.5	248.7	206.3	108.7
1.65V/cell	1723.2	1404.7	1185.4	904.1	723.9	543.3	432.4	362.4	312.2	251.3	208.1	109.5
1.60V/cell	1831.6	1466.0	1229.0	944.4	754.1	563.3	446.8	373.5	320.9	257.2	212.5	111.5

Constant Power Discharge (Watts) at 25 °C (77°F)

F.V/Time	30min	45min	1h	1.5h	2h	3h	4h	5h	6h	8h	10h	20h
1.85V/cell	2363.5	2013.7	1835.5	1481.0	1202.6	917.8	739.9	625.5	543.8	442.9	370.9	199.8
1.80V/cell	2649.7	2187.9	1966.4	1611.1	1301.8	979.9	794.8	671.7	581.8	473.2	395.2	210.6
1.75V/cell	2768.2	2286.6	2110.5	1655.1	1334.4	1011.0	811.6	684.8	592.3	480.9	400.7	213.1
1.70V/cell	2920.3	2399.7	2178.7	1700.9	1369.8	1035.8	829.1	698.4	603.6	488.4	406.3	215.6
1.65V/cell	2992.1	2516.1	2246.1	1725.0	1387.8	1048.5	838.6	705.5	609.7	492.8	409.4	217.1
1.60V/cell	3153.0	2598.2	2306.6	1787.1	1435.1	1080.7	862.1	724.0	624.2	502.9	417.0	220.8



IEEE/UL Battery
Sizing by
MooreU
610-952-6067
www.mooreu.com



LMB Series-Modular Battery

LMB2-2000(2V2000Ah)



Applications

- Tele-communication central station (wired or cellular)
- Power system communication, military communication, etc.
- Network communication including: data transmission, television signal transmission, etc.
- Uninterruptable Power System (UPS- for Telecom)

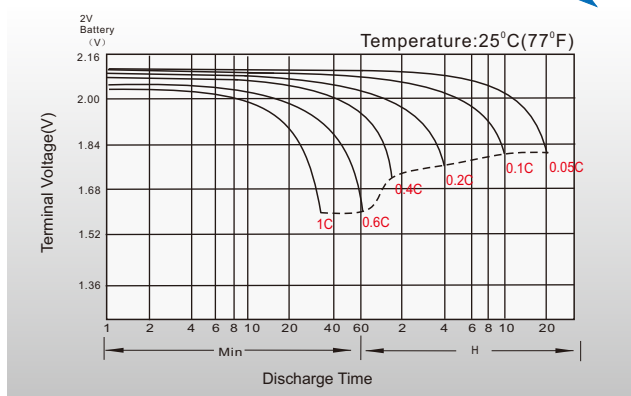
General Features

- 20 years design life(25°C)
- AGM and valve regulated design and recombination technology minimizes gassing.
- Module design allows for easy, fast installation, uniform and consistent compression, along with built in cell protection No water additions required
- High energy density design allows for more efficient battery layout and footprint

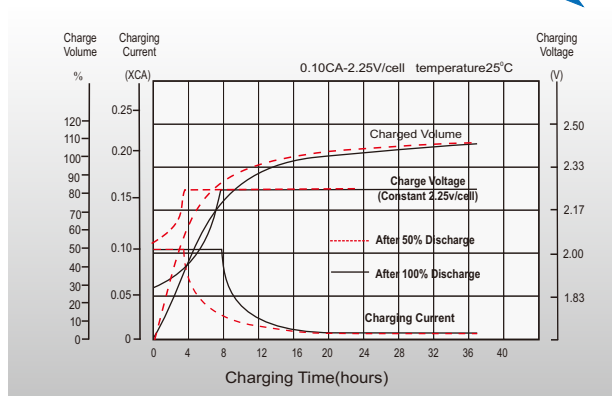
Standards

- ACC. to IEC 60896 standards.
- Manufactured in Leoch@IATF16949, ISO 45001, ISO 9001 and ISO 14001 certified production facilities

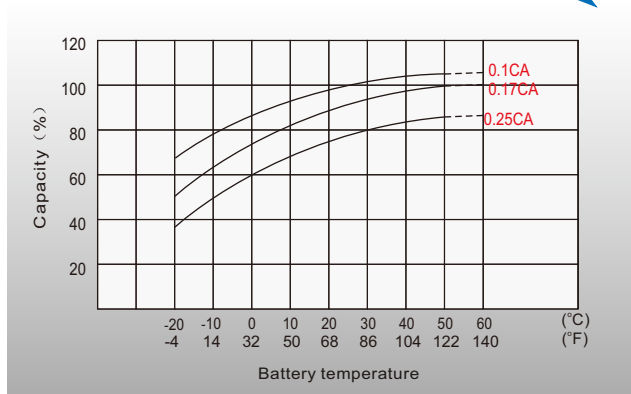
Discharge Characteristics



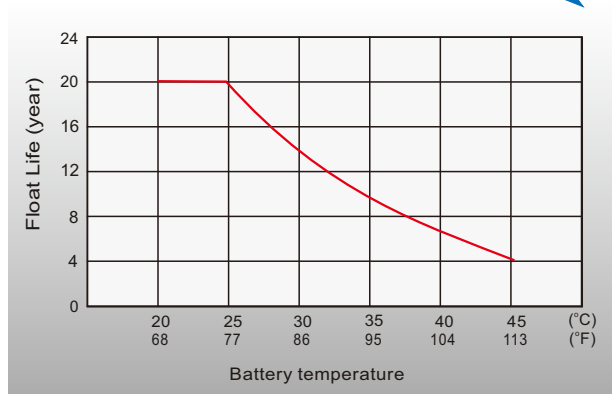
Float Charging Characteristics



Temperature Effects in Relation to Battery Capacity



Effect of Temperature on Long Term Float Life



Sales Offices Worldwide

China Sales Office

5th Floor, Xinbaohui Bldg., Nanhai Blvd.,
Nanshan, Shenzhen, China. 518052
Tel: +86-755-86036060 (100 lines)
Fax: +86-755-26067269
E-mail: export@leoch.com

HongKong Sales Office

Workshop C, 33/F, TML Tower, No. 3 Hoi Shing Road,
Tsuen Wan, New Territories, Hong Kong
Tel: +852 35786666
Fax: +44 1452 690125
E-mail: sales.hk@leoch.com

Singapore Sales Office

No. 1 Tech Park Crescent,
Singapore 638131
Tel: +65 68636078
Fax: +65 6863 6079
Email: sales.sg@leoch.com

Australia Sales Office

2/29 Tarlington Place, Smithfield, NSW 2164
Australia
Tel: 02 9756 0950
E-mail: sales.au@leoch.com

North America Sales Office

19751 Descartes
Foothill Ranch, CA 92610, USA
Tel: 949-588-5853
Fax: 949-588-5966
E-mail: sales@leoch.us
Http://www.leoch.us

UK Sales Office

9B Wheatstone Court, Waterwells, Business Park,
Gloucester, GL2-2AQ, UK United Kingdom
Tel: +44(0) 1452 729428 / 1452 729696
Fax: +44 1452 690125
E-mail: Sales.Europe@leoch.com
Http://www.leoch.eu

EMEA Sales Office

1 Deligiorgi St., 121 31 Athens,
Greece
Tel: +30 210 5760318 (2 lines)
E-mail: support_EMEA@leoch.com
Http://www.leoch.eu

India Sales Office

Shed no.A-53(b), 2nd Stage of Peenya Industrial Area,
Bangalore North Taluk, Bangalore-560058, India
Tel: +91-80-23440018/23440019
Fax: +91-80-23440017
E-mail: indiasales@leoch.com



[Http://www.leoch.com](http://www.leoch.com)

© 2021 LEOCH. All rights reserved.

Trademarks and logos are the property of LEOCH and its affiliates unless otherwise noted.
Subject to revisions without prior notice.

Publication No.: LB-LMB2-2000-PD-EN-V1.0-202106