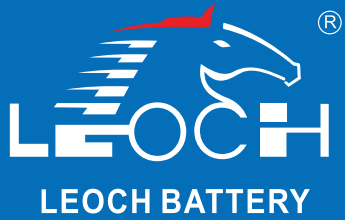


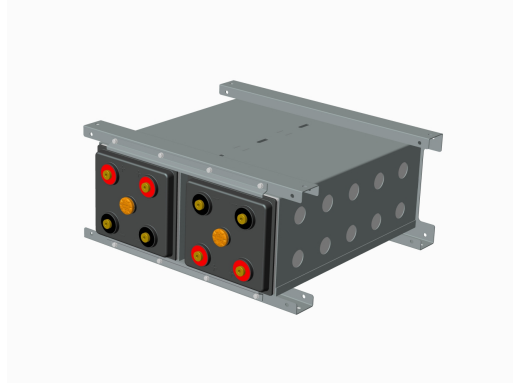
LMB Series-Modular Battery

LMB2-1500(2V1500Ah)

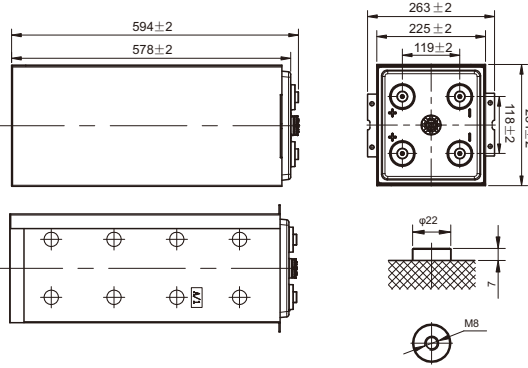


Specifications

Rated Voltage	2V	
Nominal Capacity	C ₁₀ , 1.80V/cell	1500Ah
Dimension	Length	251±2mm (9.88 inches)
	Width	225±2mm (8.86 inches)
	Depth	578±2mm (22.8 inches)
	Total Depth	594±2mm (23.4 inches)
Approx Weight	191.0kg/2 pcs (421.1 lbs/2 pcs)	
Terminal	M8	
Container Material	PP+Steel	
Rated Capacity (25°C)	1568.0 Ah	C20(78.4A, 1.80V/cell)
	1500.0 Ah	C10(150.0A, 1.80V/cell)
	1291.5 Ah	C5(258.3A, 1.75V/cell)
	1123.5 Ah	C3(374.5A, 1.75V/cell)
	889.0 Ah	C1(889.0A, 1.60V/cell)
Max. Discharge Current	12000A (5s)	
Internal Resistance (25°C)	Approx 0.3mΩ	
Operating Temp. Range	Discharge	-20 ~ 55°C (-4 ~ 131°F)
	Charge	-20 ~ 40°C (-4 ~ 104°F)
	Storage	-15 ~ 50°C (5 ~ 122°F)
Nominal Operating Temp. Range	25±3°C (77±5°F)	
Cycle Use	Initial Charging Current less than 450A. Voltage 2.40V~2.50V at 25°C(77°F)Temp. Coefficient -5mV/°C	
	Standby Use	
Effect of temp. to Capacity	Initial Charging Current less than 450A. Voltage 2.25V~2.30V at 25°C(77°F)Temp. Coefficient -3mV/°C	
	40°C (104°F)	103%
	25°C (77°F)	100%
Self Discharge	0°C (32°F)	86%
	LMB series batteries may be stored for up to 6 months at 25°C(77°F) and then a freshening charge is required. For higher temperatures the time interval will be shorter.	



Layout



Constant Current Discharge (Amperes) at 25 °C (77°F)

F.V/Time	30min	45min	1h	2h	3h	4h	5h	6h	8h	10h	20h
1.85V/cell	1097.7	882.0	727.0	438.6	344.0	282.4	240.3	209.9	168.8	143.2	75.8
1.80V/cell	1167.2	929.5	773.5	463.3	361.0	295.1	250.5	219.4	175.4	150.0	78.4
1.75V/cell	1239.9	978.9	808.0	483.0	374.5	305.3	258.3	224.6	178.7	151.8	79.2
1.70V/cell	1304.3	1016.9	837.1	497.5	384.5	312.0	262.8	228.6	181.6	152.9	80.1
1.65V/cell	1371.8	1062.5	868.0	512.8	393.0	318.8	268.5	232.6	184.2	154.5	81.0
1.60V/cell	1421.2	1092.0	889.0	525.3	401.5	323.3	272.4	235.9	186.6	156.4	82.2

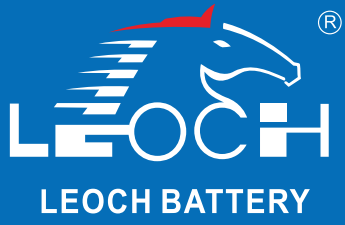
Constant Power Discharge (Watts) at 25 °C (77°F)

F.V/Time	30min	45min	1h	2h	3h	4h	5h	6h	8h	10h	20h
1.85V/cell	2097.8	1695.8	1426.2	853.1	672.3	553.8	473.4	414.7	334.9	284.7	150.9
1.80V/cell	2212.8	1775.3	1503.8	896.9	702.2	576.8	491.3	431.7	342.0	297.9	155.8
1.75V/cell	2332.7	1858.7	1588.0	931.2	726.5	594.7	504.9	440.7	348.2	301.1	157.3
1.70V/cell	2433.1	1917.4	1614.5	955.3	743.1	605.3	512.1	447.8	354.1	303.1	159.0
1.65V/cell	2540.1	1992.2	1664.1	980.5	756.2	616.3	521.5	454.3	358.3	305.6	160.6
1.60V/cell	2605.1	2028.4	1690.2	998.0	768.6	622.2	526.9	459.2	364.3	308.9	162.7



LMB Series-Modular Battery

LMB2-1500(2V1500Ah)



Applications

- Tele-communication central station (wired or cellular)
- Power system communication, military communication, etc.
- Network communication including: data transmission, television signal transmission, etc.
- Uninterruptable Power System (UPS- for Telecom)

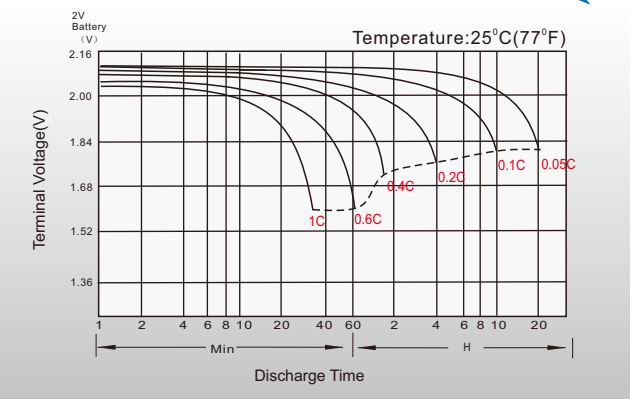
General Features

- 20 years design life(25°C)
- AGM and valve regulated design and recombination technology minimizes gassing.
- Module design allows for easy, fast installation, uniform and consistent compression, along with built in cell protection No water additions required
- High energy density design allows for more efficient battery layout and footprint

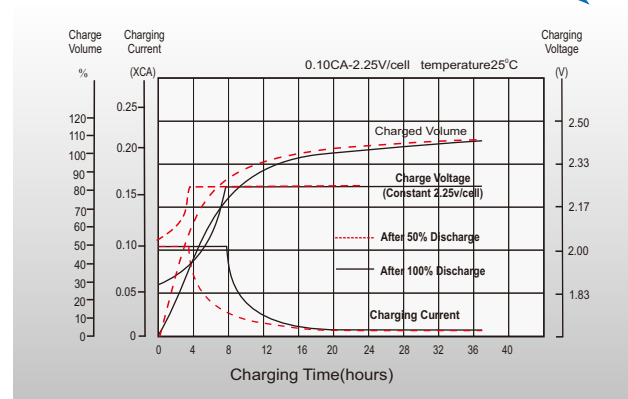
Standards

- ACC. to IEC 60896 standards.
- Manufactured in Leoch@IATF16949, ISO 45001, ISO 9001 and ISO 14001 certified production facilities

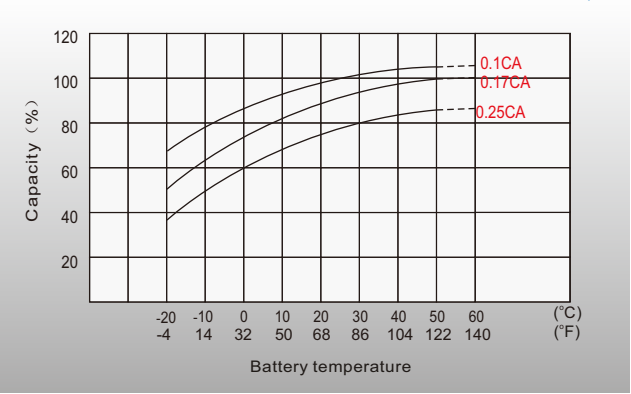
Discharge Characteristics



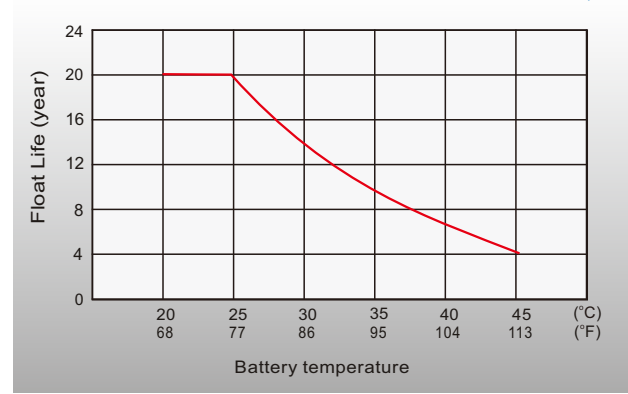
Float Charging Characteristics



Temperature Effects in Relation to Battery Capacity



Effect of Temperature on Long Term Float Life



Sales Offices Worldwide

China Sales Office
5th Floor, Xinbaohui Bldg., Nanhai Blvd.,
Nanshan, Shenzhen, China. 518052
Tel: +86-755-86036060 (100 lines)
Fax: +86-755-26067269
E-mail: export@leoch.com

HongKong Sales Office
Workshop C, 33/F, TML Tower, No. 3 Hoi Shing Road,
Tsuen Wan, New Territories, Hong Kong
Tel: +852 35786666
Fax: +44 1452 690125
E-mail: sales.hk@leoch.com

Singapore Sales Office
No. 1 Tech Park Crescent,
Singapore 638131
Tel: +65 68636078
Fax: +65 6863 6079
Email: sales.sg@leoch.com

Australia Sales Office
2 /29 Tarlington Place, Smithfield, NSW 2164
Australia
Tel: 02 9756 0950
E-mail: sales.au@leoch.com

North America Sales Office
19751 Descartes
Foothill Ranch, CA 92610, USA
Tel: 949-588-5853
Fax: 949-588-5966
E-mail: sales@leoch.us
Http:// www.leoch.us

UK Sales Office
9B Wheatstone Court, Waterwells, Business Park,
Gloucester, GL2-2AQ, UK United Kingdom
Tel: +44(0) 1452 729428 / 1452 729696
Fax: +44 1452 690125
E-mail: Sales.Europe@leoch.com
Http:// www.leoch.eu

EMEA Sales Office
1 Deligiorgi St., 121 31 Athens,
Greece
Tel: +30 210 5760318 (2 lines)
E-mail: support_EMEA@leoch.com
Http:// www.leoch.eu

India Sales Office
Shed no.A-53(b), 2nd Stage of Peenya Industrial Area,
Bangalore North Taluk, Bangalore-560058, India
Tel: +91-80-23440018/23440019
Fax: +91-80-23440017
E-mail: indiasales@leoch.com