



RL2-300A(2V300Ah)

Specification

Cells Per Unit	1
Voltage Per Unit	2
Nominal Capacity	300Ah@10hour-rate to 1.80V per cell @25°C
Weight	Approx. 17.5 Kg (Tolerance ± 3%)
Internal Resistance	Approx. 0.72 mΩ
Terminal	F10(M8)
Max. Discharge Current	1500A (5 sec)
Short Circuit Current	2910A
Design Life	20 years (Float charging)
Recommended Maximum Charging Current	60 A
Reference Capacity	C1 178.4AH C3 232.5AH C5 262.5AH C10 300.0AH
Standby Use Voltage	2.27 V~2.30 V @ 25°C Temperature Compensation: -3mV/°C/Cell
Cycle Use Voltage	2.43 V~2.47 V @ 25°C Temperature Compensation: -4mV/°C/Cell
Operating Temperature Range	Discharge: -20°C~60°C Charge: -0°C~50°C Storage: -20°C~60°C
Normal Operating Temperature Range	25°C ± 5°C
Self Discharge	Valve Regulated Lead Acid (VRLA) batteries can be stored for up to 6 months at 25°C and then recharging be stored for up to 6 months at 25°C and then recharging than 3% at 25°C. Please charge batteries before using.
Container Material	A.B.S. UL94-HB, UL94-V0 Optional.



RL series is a general purpose battery with 20 years design life in float service. It meets with heavy duty grids, thicker plates, special additives and advanced AGM valve regulated technology, the RL series battery provides consistent performance and long service life. The new grid design effectively reduces the internal resistance, which provides higher specific energy density and excellent high rate discharge characteristics. It is suitable for communications back-up power and EPS/UPS applications.



ISO 9001



ISO 14001



OHSAS 18001

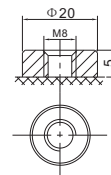
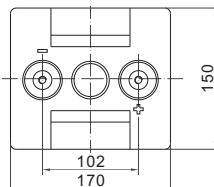
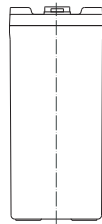
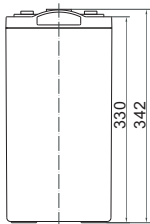


MH 28539



G4M20206-0910-E-16

Dimensions



F10 TERMINAL

Length	170±2mm (6.69 inches)
Width	150±2mm (5.91 inches)
Height	330±2mm (13.0 inches)
Total Height	342±2mm (13.5 inches)
Terminal	Value
M5	6~7 N*m
M6	8~10 N*m
M8	10~12 N*m

Unit: mm

Constant Current Discharge Characteristics : A (25°C)

F.V/Time	15MIN	30MIN	1HR	2HR	3HR	4HR	5HR	8HR	10HR
1.60V	400.3	296.1	178.4	107.6	82.0	65.4	55.1	38.0	32.0
1.67V	389.8	289.6	175.1	106.0	80.9	64.6	54.5	37.6	31.7
1.70V	376.0	281.0	170.8	103.9	79.5	63.5	53.6	37.1	31.3
1.75V	358.0	269.7	165.0	101.2	77.5	62.1	52.5	36.4	30.7
1.80V	334.9	255.1	157.5	97.5	75.0	60.2	51.0	35.5	30.0
1.85V	305.8	236.5	147.8	92.8	71.7	57.7	49.1	34.3	29.1

Constant Power Discharge Characteristics : WPC (25°C)

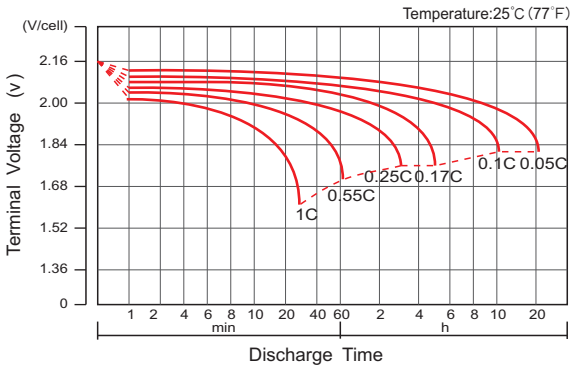
F.V/Time	15MIN	30MIN	1HR	2HR	3HR	4HR	5HR	8HR	10HR
1.60V	727.0	553.6	338.2	205.5	157.4	126.1	107.6	74.7	62.9
1.67V	718.5	547.1	334.4	203.8	156.2	125.2	106.7	74.1	62.4
1.70V	697.0	532.7	327.0	200.2	153.7	123.3	105.2	73.2	61.7
1.75V	670.5	514.0	317.4	195.7	150.6	121.0	103.2	71.9	60.7
1.80V	633.6	488.5	304.5	189.4	146.2	117.7	100.5	70.2	59.4
1.85V	584.2	456.1	287.3	181.0	140.2	113.2	96.8	68.0	57.6

(Note) The above characteristics data are average values obtained within three charge/discharge cycle not the minimum values.

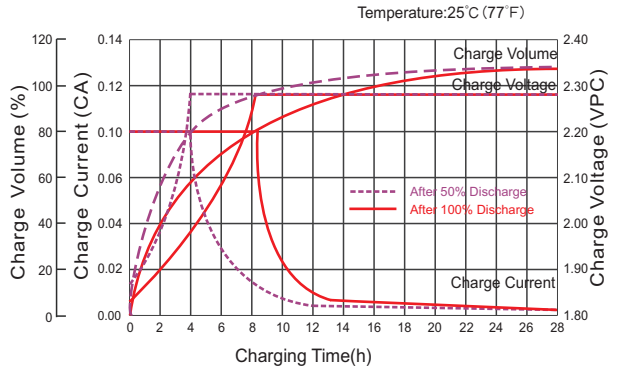
RL2-300A(2V300Ah)



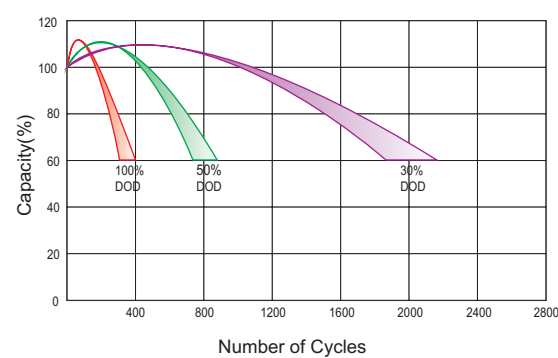
Discharge Characteristics Curve



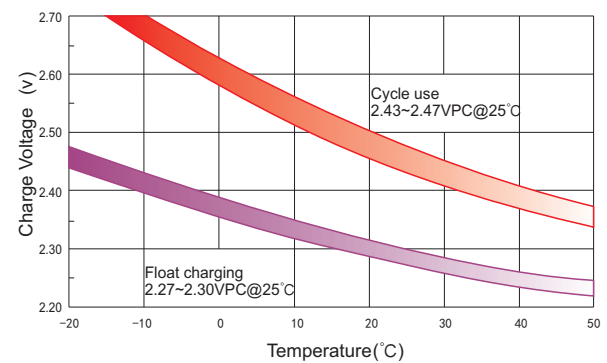
Charge Characteristic Curve For Standby Use



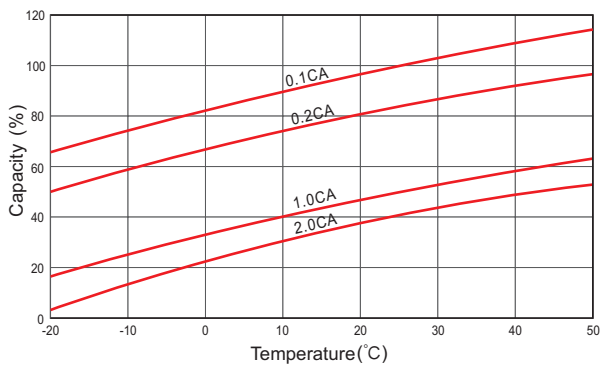
Cycle Life In Relation To Depth Of Discharge



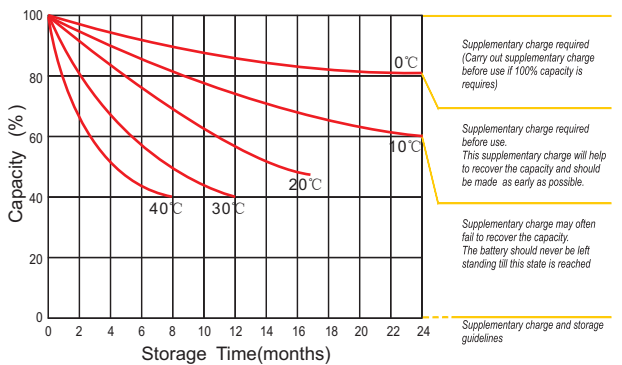
Relationship Between Charging Voltage And Temperature



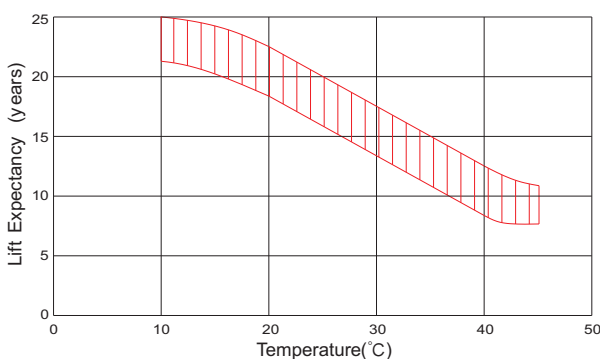
Temperature Effects On Capacity



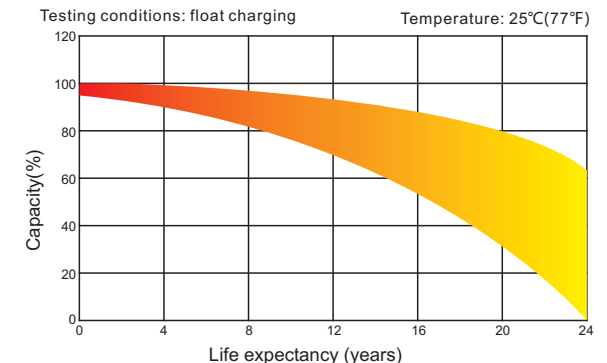
Storage Characteristics



Effect Of Temperature On Long Term Life



Charge Characteristic Curve For Standby Use



For Battery Sales + EPA Battery Recycling and AC / DC Power Services, please contact:

Moore & Moore Solutions, Inc.
 Phone: 484-302-7009
 Email: mr@mooreu.com
www.MooreU.com