



# HT12-70(12V70Ah)

## Specification

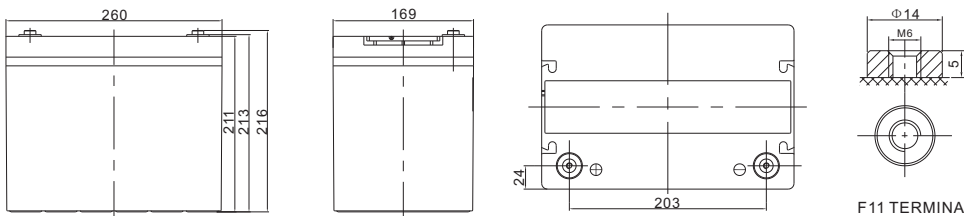


HT series is High-temperature series battery with 15 years design life in float service. It meets with IEC, JIS, BS and YDT standards. With advanced AGM valve regulated technology and high purity raw material, the HT series battery maintains high consistency for better performance and reliable standby service life. It is designed for using under high temperature conditions.

Cells Per Unit	6
Voltage Per Unit	12
Nominal Capacity	70Ah@10hour-rate to 1.80V per cell @25°C
Weight	Approx. 23.5 Kg (Tolerance ±2.0%)
Internal Resistance	Approx. 5.8 mΩ
Terminal	F15(M6)/F11(M6)
Max. Discharge Current	700A (5 sec)
Design Life	15 years (Float charging)
Recommended Maximum Charging Current	21 A
Reference Capacity	C3 52.7AH C5 60.7AH C10 70.0AH C20 74.0AH
Standby Use Voltage	13.6 V~13.8 V @ 25°C Temperature Compensation: -3mV/°C/Cell
Cycle Use Voltage	14.6 V~14.8 V @ 25°C Temperature Compensation: -4mV/°C/Cell
Operating Temperature Range	Discharge: -20°C~60°C Charge: -10°C~60°C Storage: -20°C~60°C
Normal Operating Temperature Range	35°C ±5°C
Self Discharge	RITAR Valve Regulated Lead Acid (VRLA) batteries can be stored for up to 6 months at 25°C and then recharging is recommended. Monthly Self-discharge ratio is less than 3% at 25°C. Please charge batteries before using.
Container Material	A.B.S. UL94-HB, UL94-V0 Optional.



## Dimensions



Length	260±2mm (10.2 inches)
Width	169±2mm (6.65 inches)
Height	211±2mm (8.31 inches)
Total Height	216±2mm (8.50 inches)
Terminal	Value
M5	6~7 N*m
M6	8~10 N*m
M8	10~12 N*m

Unit: mm

### Constant Current Discharge Characteristics : A (25°C)

F.V/Time	10MIN	15MIN	30MIN	1HR	2HR	3HR	4HR	5HR	8HR	10HR	20HR
1.60V	163.4	125.6	73.44	43.10	25.82	18.58	15.09	12.74	8.60	7.45	3.83
1.65V	158.5	122.3	71.83	42.30	25.44	18.33	14.90	12.59	8.51	7.38	3.80
1.70V	152.1	118.0	69.70	41.24	24.94	18.00	14.65	12.39	8.40	7.29	3.76
1.75V	143.8	112.4	66.91	39.85	24.27	17.56	14.32	12.13	8.24	7.16	3.70
1.80V	133.3	105.1	63.29	38.04	23.40	16.99	13.88	11.79	8.04	7.00	3.63
1.85V	120.1	95.97	58.67	35.70	22.26	16.24	13.31	11.34	7.77	6.78	3.53

### Constant Power Discharge Characteristics : WPC (25°C)

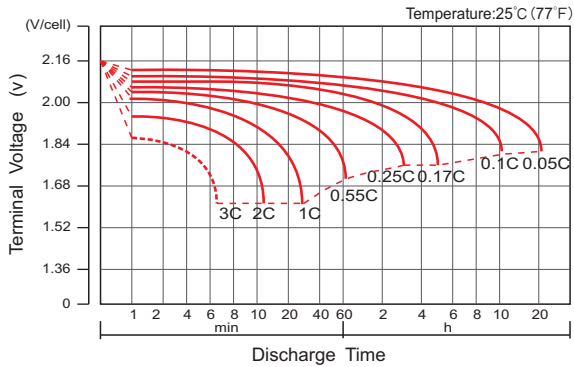
F.V/Time	10MIN	15MIN	30MIN	1HR	2HR	3HR	4HR	5HR	8HR	10HR	20HR
1.60V	281.8	222.9	135.4	81.80	49.67	36.01	29.40	24.92	17.04	14.87	7.65
1.65V	280.7	221.6	134.4	81.13	49.30	35.75	29.19	24.76	16.93	14.76	7.60
1.70V	272.4	215.7	131.1	79.38	48.48	35.20	28.77	24.42	16.72	14.58	7.53
1.75V	262.2	208.4	127.2	77.08	47.40	34.49	28.22	23.99	16.44	14.35	7.43
1.80V	247.2	197.7	121.5	73.93	45.93	33.49	27.46	23.40	16.07	14.03	7.29
1.85V	226.7	183.0	113.8	69.88	43.93	32.16	26.43	22.57	15.57	13.61	7.11

(Note) The above characteristics data are average values obtained within three charge/discharge cycle not the minimum values.

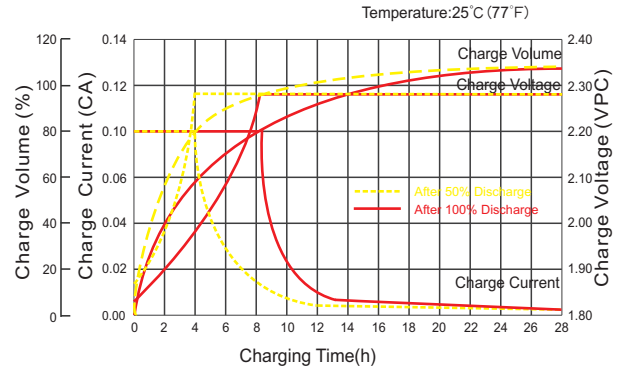
# HT12-70(12V70Ah)



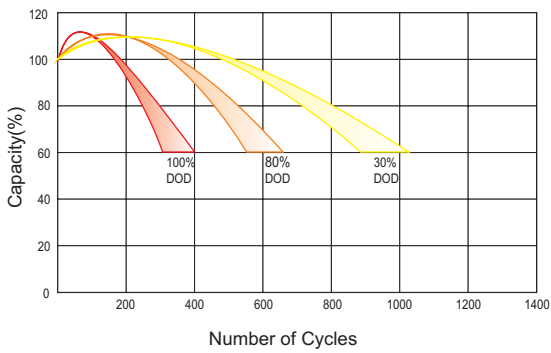
## Discharge Characteristics Curve



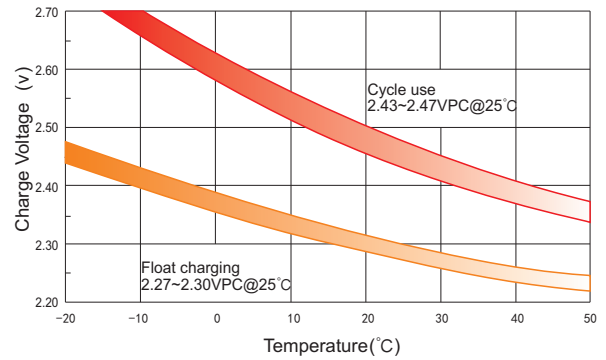
## Charge Characteristic Curve For Standby Use



## Cycle Life In Relation To Depth Of Discharge



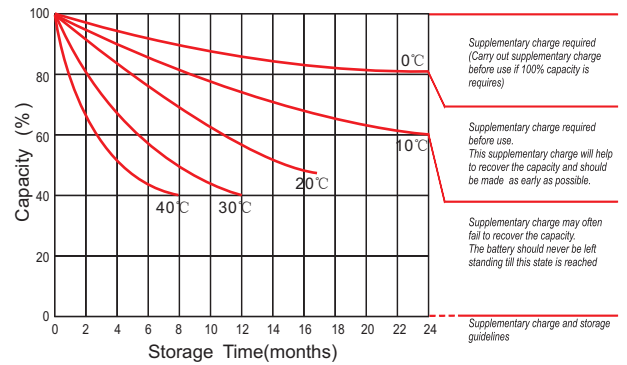
## Relationship Between Charging Voltage And Temperature



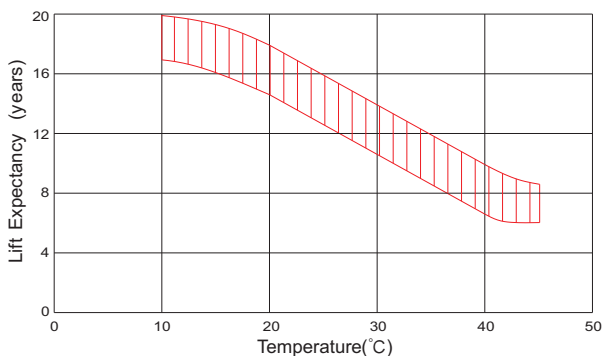
## Temperature Effects On Capacity



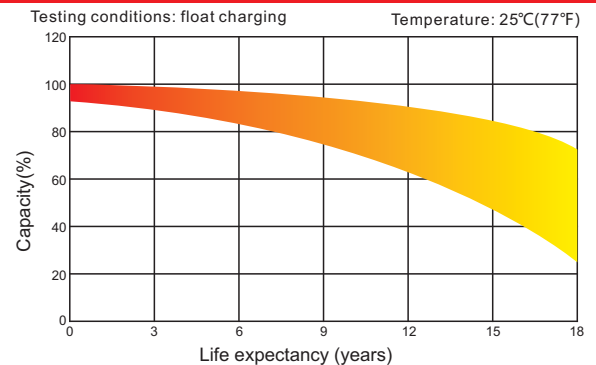
## Storage Characteristics



## Effect Of Temperature On Long Term Life



## Life Characteristics Of Standby Use



For Battery Sales + EPA Battery Recycling and AC / DC Power Services, please contact:

**Moore & Moore Solutions, Inc.**  
 Phone: 484-302-7009  
 Email: mr@mooreu.com  
 www.MooreU.com